

圖 (二) 大表演廳_3F 平面圖 (單位：公分)
 Figure(2) Main Theatre_3rd Floor Plan (Unit: cm)

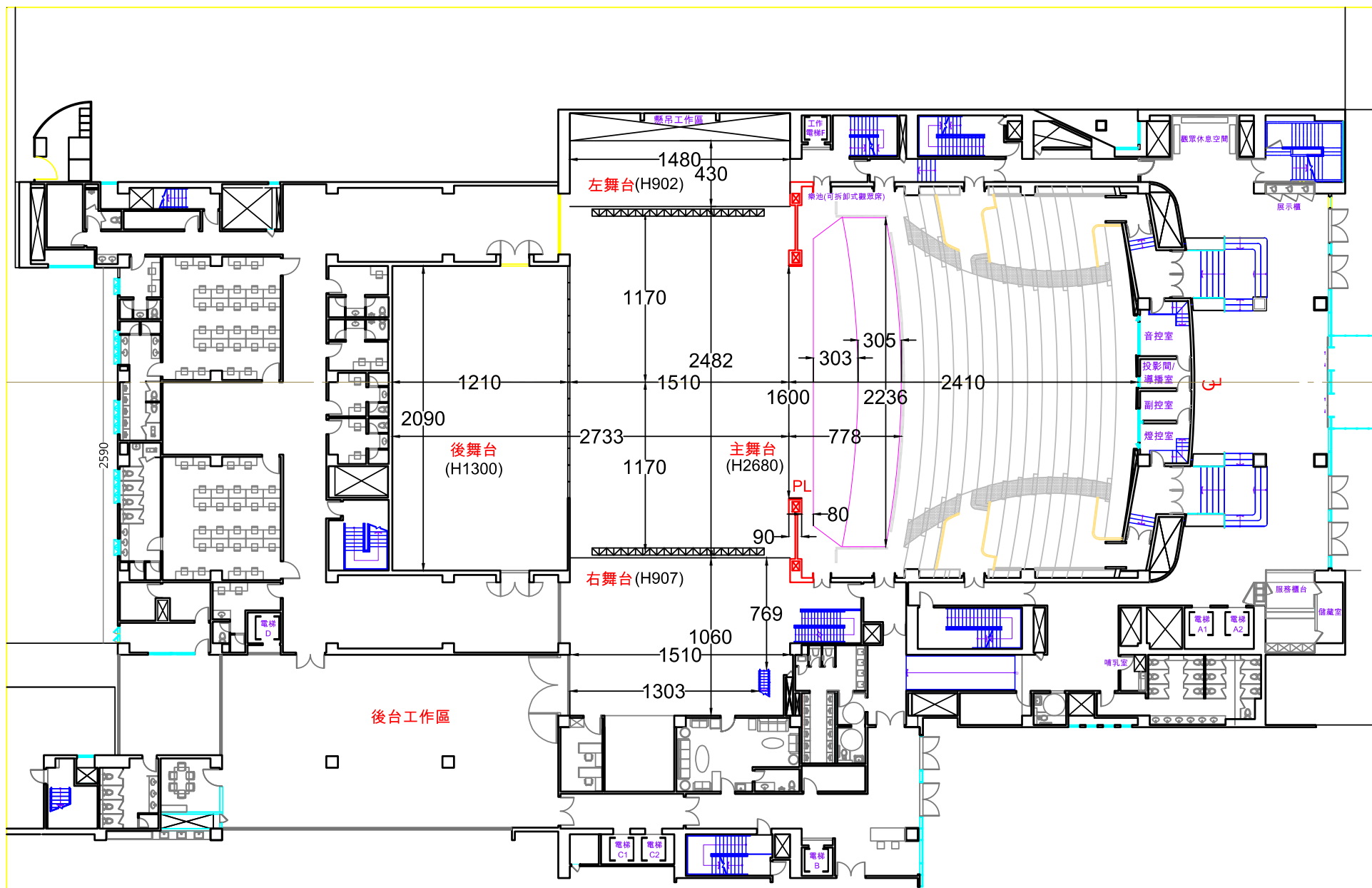


圖 (三) 大表演廳_舞台尺寸平面圖 (單位：公分)
 Figure(3) Main Theatre _ Stage Dimension Plan (Unit: cm)

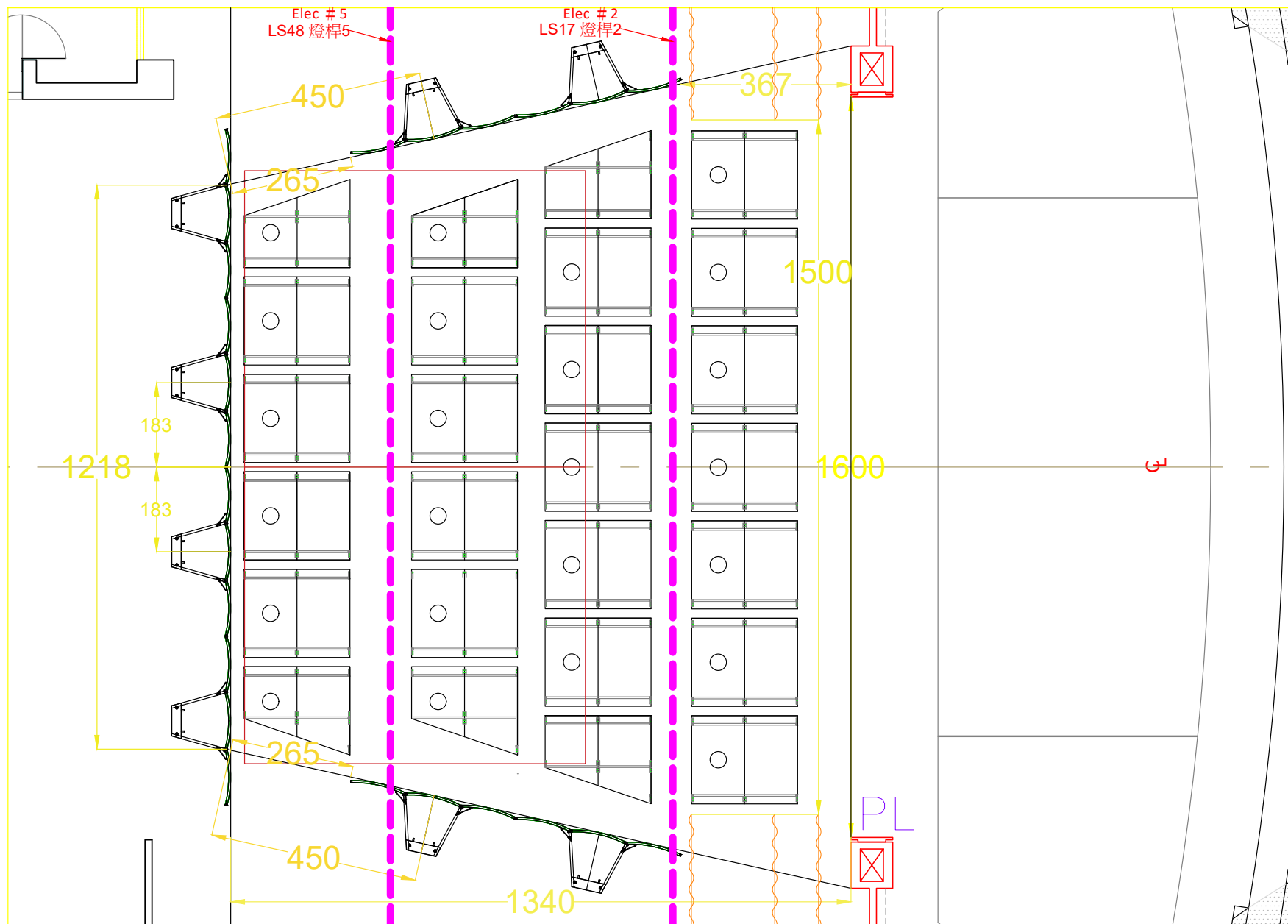


圖 (四) 大表演廳_反音板—大舞台版 (單位: 公分)
 Figure(4) Main Theatre _ Portable Acoustic Shells - Grand size (Unit: cm)

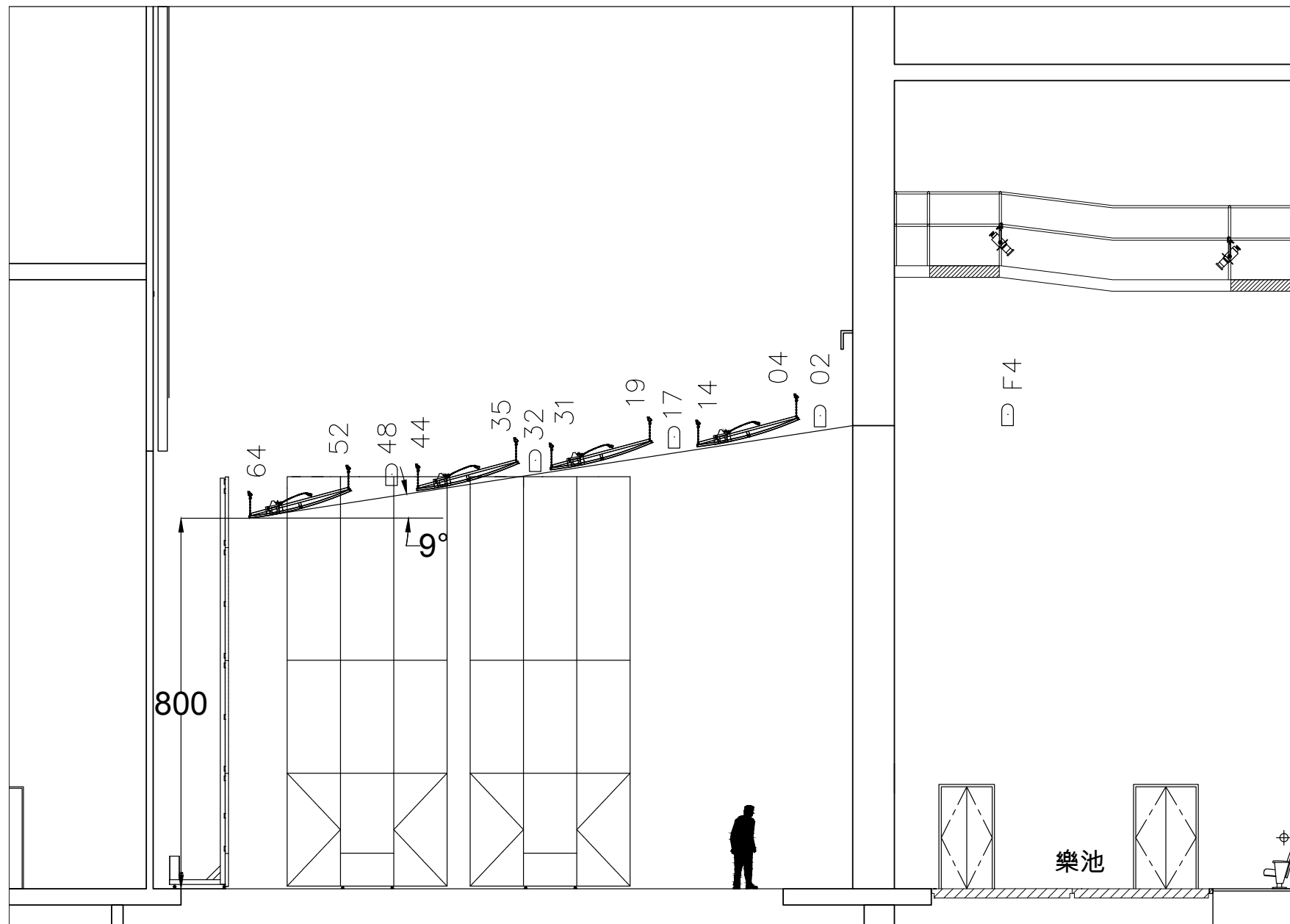


圖 (五) 大表演廳_反音板—大舞台版 (單位：公分)
 Figure(5) Main Theatre _Portable Acoustic Shells - Grand size (Unit: cm)

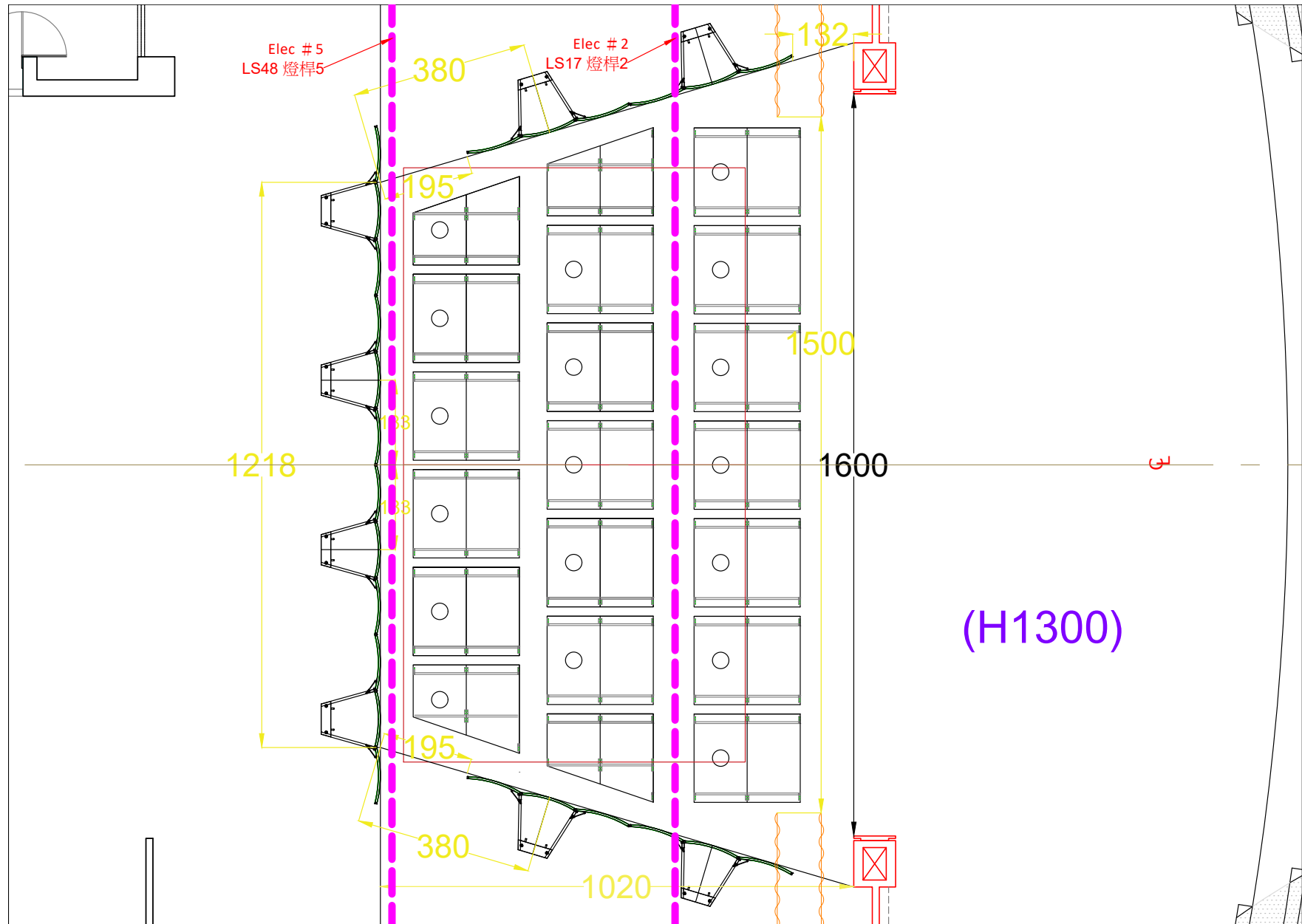


圖 (六) 大表演廳_反音板—小舞台版 (單位：公分)
 Figure(6) The Main Theatre _ Portable Acoustic Shells - General size (Unit: cm)

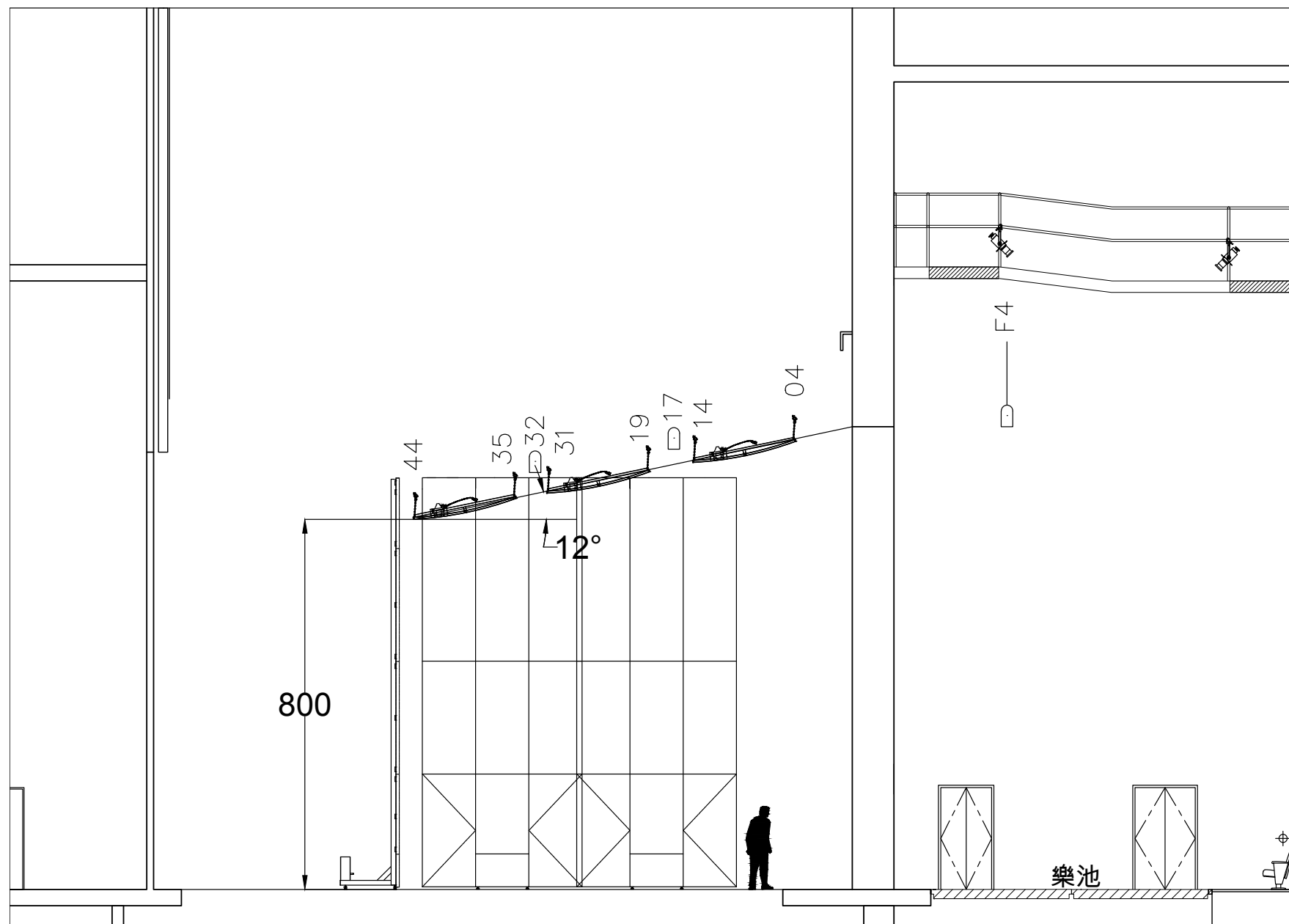


圖 (七) 大表演廳_反音板—小舞台版 (單位：公分)
 Figure(7) Main Theatre _ Portable Acoustic Shells - General size (Unit: cm)

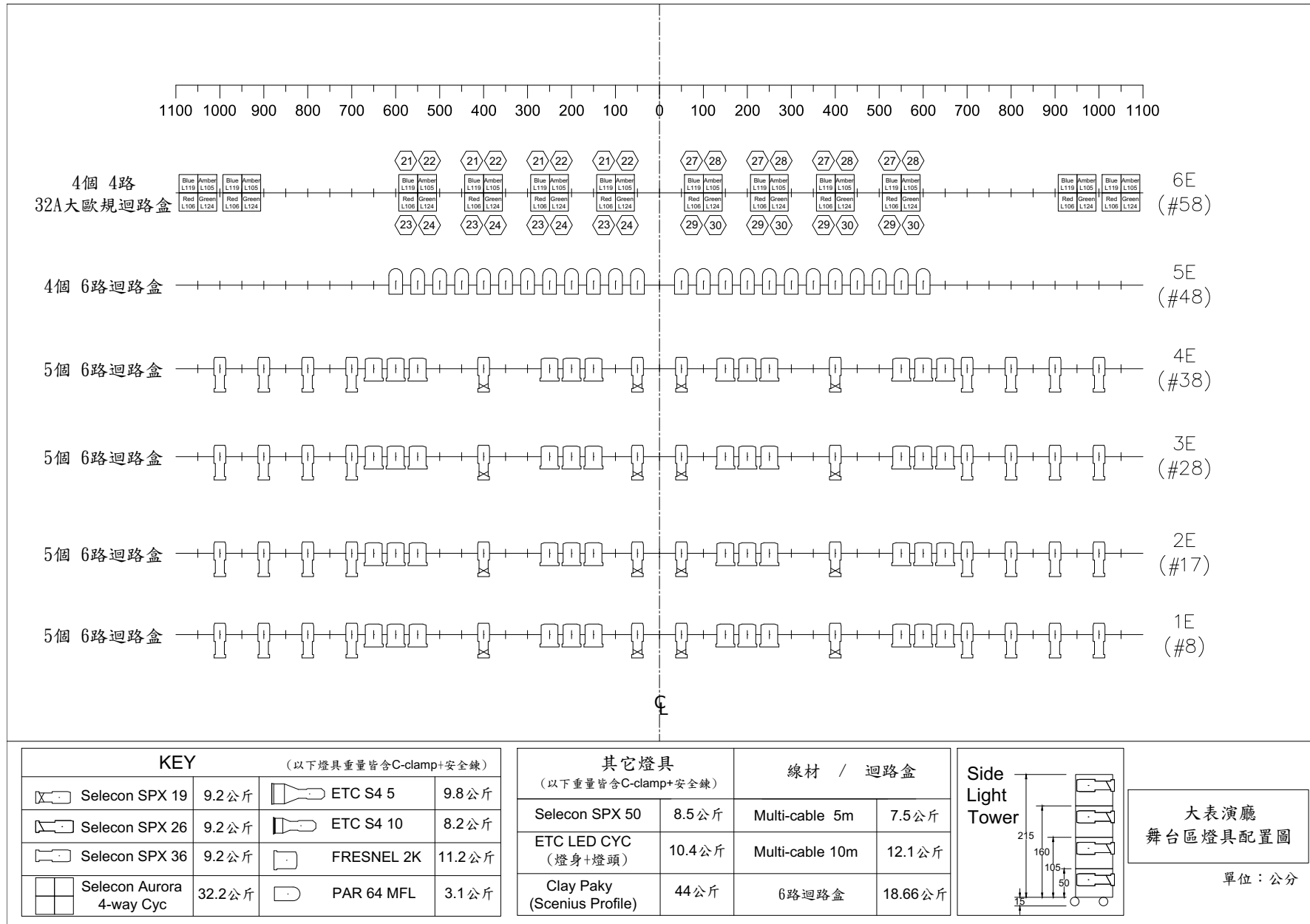


圖 (八) 大表演廳—舞台區_燈具配置圖 (單位：公分)
Figure(8) Main Theatre - Main Stage _Light Plot (Unit: cm)

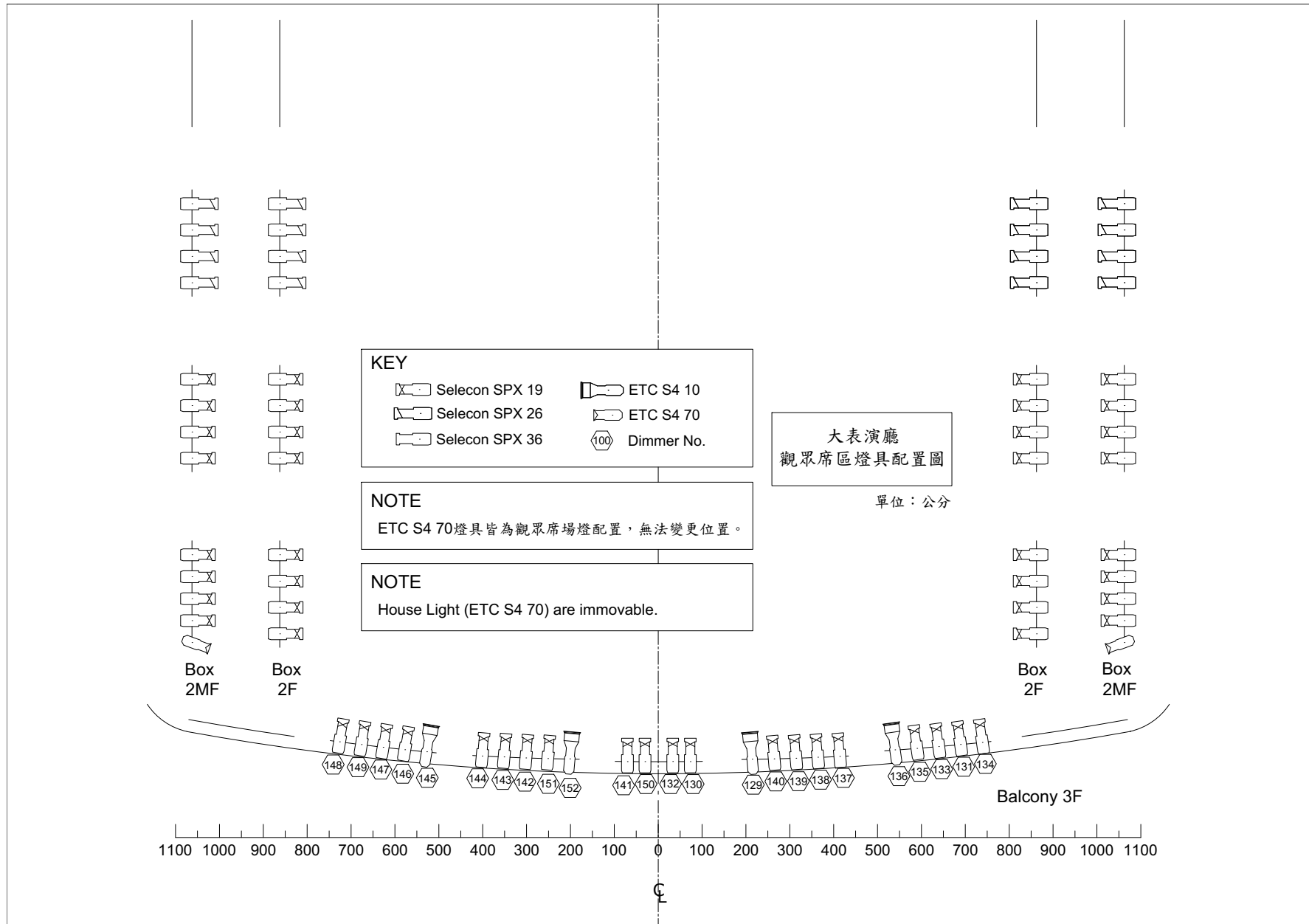


圖 (九) 大表演廳外區—包廂_燈具配置圖 (單位：公分)
Figure(9) Main Theatre - Box and Balcony__Light Plot (Unit: cm)

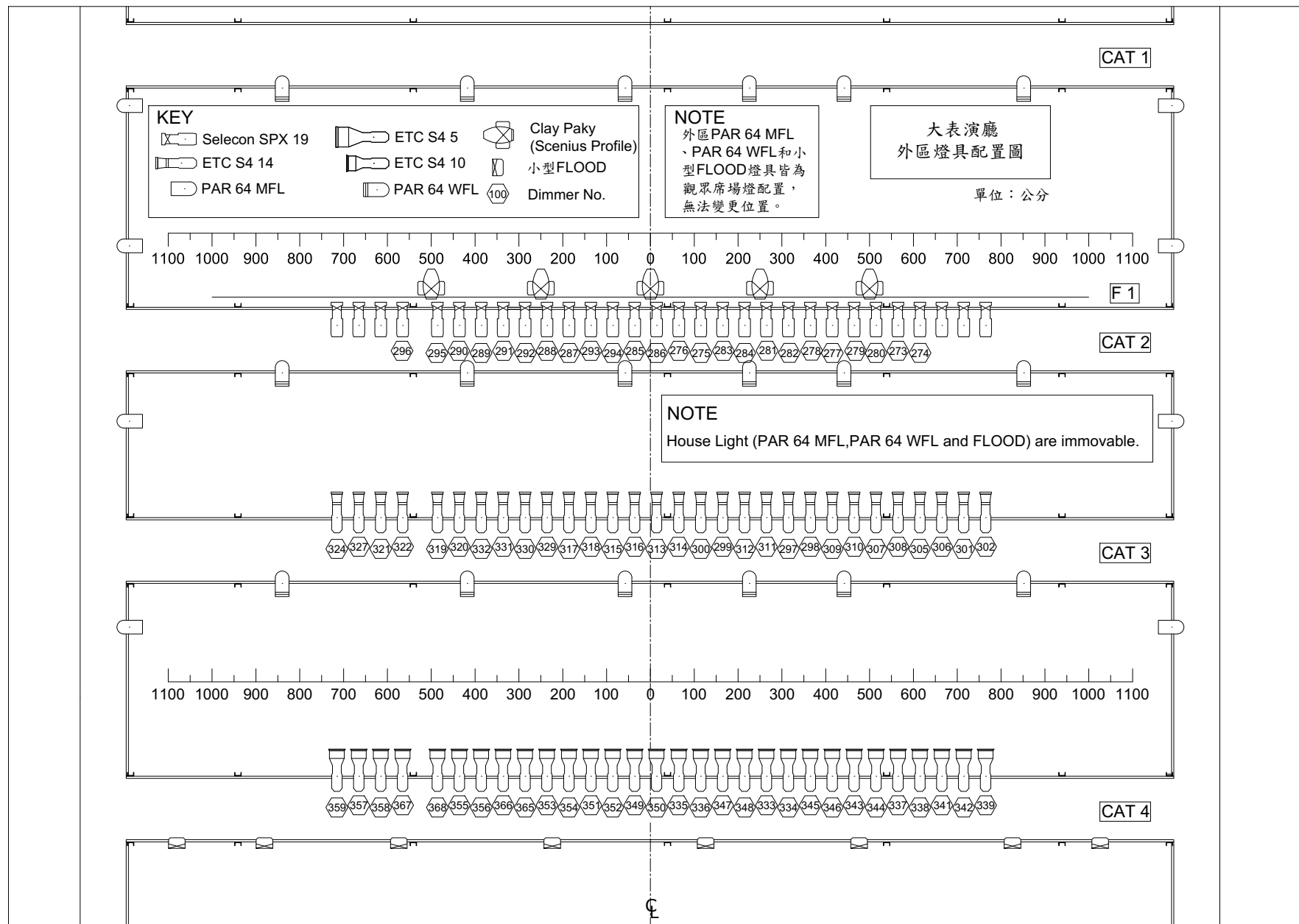


圖 (十) 大表演廳外區—貓道_燈具配置圖 (單位：公分)

Figure(10) Main Theatre - Catwalk__Light Plot (Unit: cm)

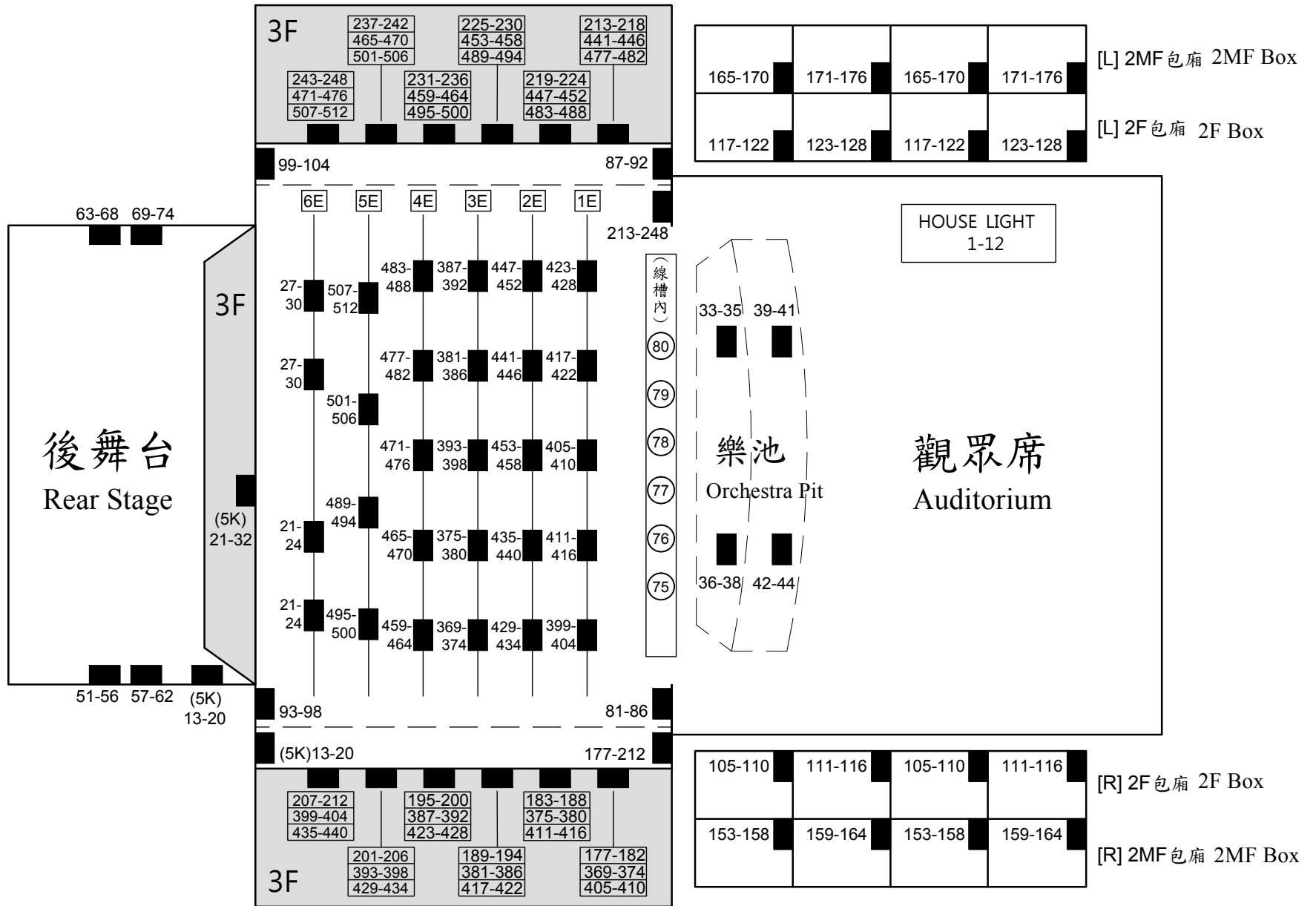


圖 (十一) 大表演廳_燈光迴路圖表-1
Figure(11) Main Theatre__Lighting Circuit Chart - 1

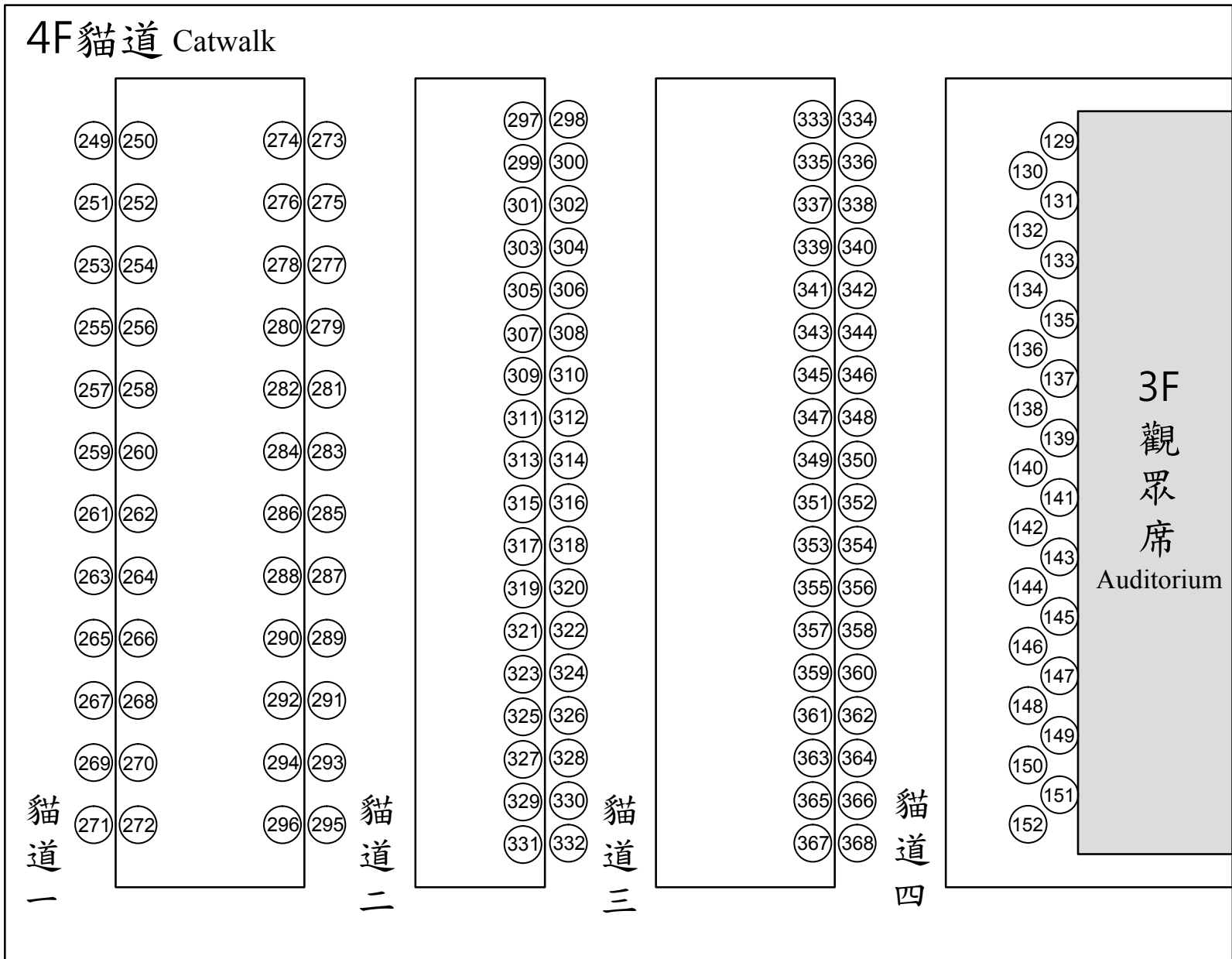


圖 (十二) 大表演廳_燈光迴路圖表-2
 Figure(12) Main Theatre_Lighting Circuit Chart - 2

B1



7F

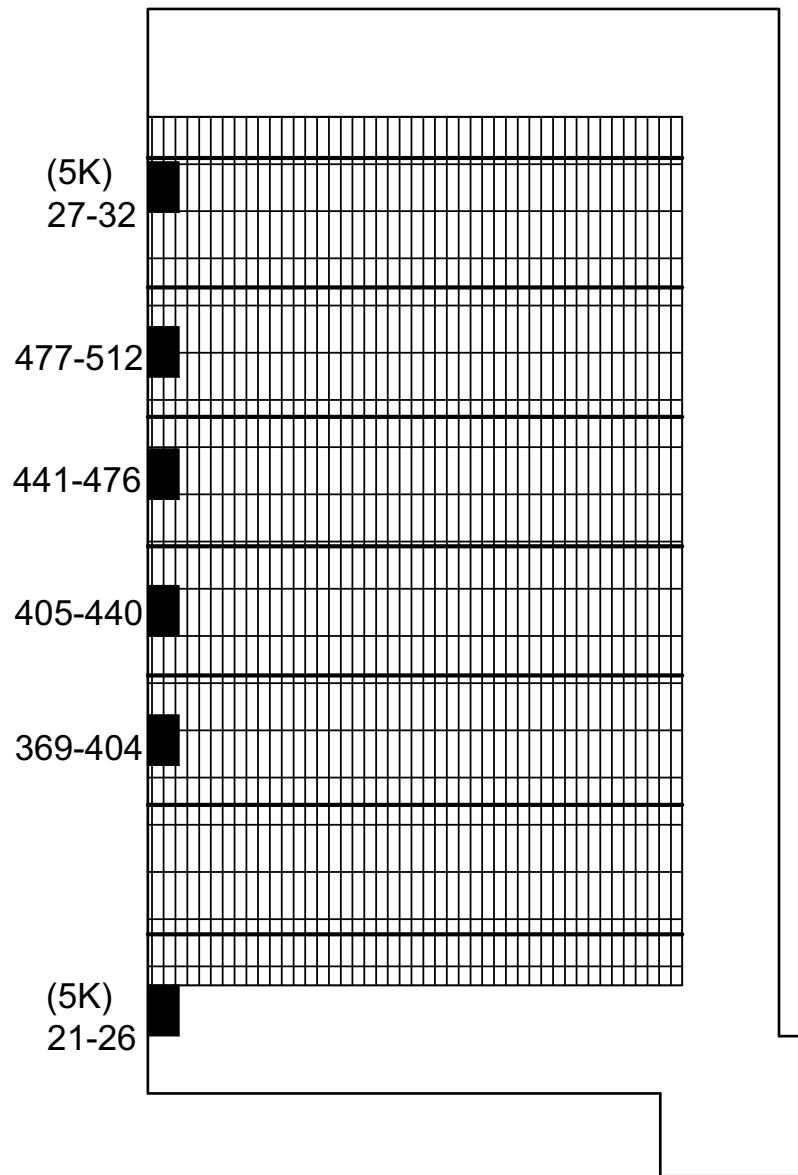


圖 (十三) 大表演廳__燈光迴路圖表 - 3
Figure(13) Main Theatre__Lighting Circuit Chart - 3

| 位置 Position | 迴路編號 Circuit number | 迴路數 Quantity | 備註 Note | 重號位置 The position of the repeat circuit |
|--------------------------|--|-----------------|--|--|
| 後舞台右下牆面 Rear Stage DR | 13~20 | 8 | Socapax 19pin 25A 大歐規CEE 3pin 32A(5KW) | 右側上舞台牆面 UR |
| 右側下舞台牆面 DR | 177~182 183~188 189~194 195~200 201~206 207~212 | 36 | Socapax 19pin 25A | 3F右側工作廊道 3F Right Gallery |
| 右側上舞台牆面 UR | 013~020 | 8 | Socapax 19pin 25A 大歐規CEE 3pin 32A(5KW) | 後舞台右下牆面 Rear Stage DR |
| 燈桿1(#8) Elec1 | 399~404 411~416 405~410 417~422 423~428 | 30 | 小歐規CEE 3pin 16A(3KW) | |
| 燈桿2(#17) Elec2 | 429~434 435~440 453~458 441~446 447~452 | 30 | 小歐規CEE3pin 16A(3KW) | |
| 燈桿3(#28) Elec3 | 369~374 375~380 393~398 381~386 387~392 | 30 | 小歐規CEE3pin 16A(3KW) | |
| 燈桿4(#38) Elec4 | 459~464 465~470 471~476 477~482 483~488 | 30 | 小歐規CEE 3pin 16A(3KW) | |
| 燈桿5(#48) Elec5 | 495~500 489~494 501~506 507~512 | 24 | 小歐規CEE 3pin 16A(3KW) | |
| 燈桿6(#58) Elec6 | 021~024(右R) 027~030(左L) | 8 | 小歐規CEE 3pin 16A(3KW) | |
| 左側下舞台牆面 DL | 213~218 219~224 225~230 231~236 237~242 243~248 | 36 | Socapax 19pin 25A | 3F左側工作廊道 3F Left Gallery |

圖 (十四) 大表演廳__燈光迴路圖表 - 4
Figure(14) Main Theatre__Lighting Circuit Chart - 4

| 位置 Position | | 迴路編號 Circuit number | 迴路數 Quantity | 備註 Note | 重號位置 The position of the repeat circuit | | |
|---|----------|------------------------|-----------------|------------|--|----------|--------------------|
| 2F | 包廂1 Box1 | 右舞台 Right Stage | 105-110 | 6 | Socapax 19pin 25A | 包廂3 Box3 | 右舞台 Right Stage |
| | 包廂2 Box2 | | 111-116 | 6 | Socapax 19pin 25A | 包廂4 Box4 | |
| | 包廂3 Box3 | | 105-110 | 6 | Socapax 19pin 25A | 包廂1 Box1 | |
| | 包廂4 Box4 | | 111-116 | 6 | Socapax 19pin 25A | 包廂2 Box2 | |
| | 包廂1 Box1 | 左舞台 Left Stage | 117-122 | 6 | Socapax 19pin 25A | 包廂3 Box3 | 左舞台 Left Stage |
| | 包廂2 Box2 | | 123-128 | 6 | Socapax 19pin 25A | 包廂4 Box4 | |
| | 包廂3 Box3 | | 117-122 | 6 | Socapax 19pin 25A | 包廂1 Box1 | |
| | 包廂4 Box4 | | 123-128 | 6 | Socapax 19pin 25A | 包廂2 Box2 | |
| 2MF | 包廂1 Box1 | 右舞台 Right Stage | 153-158 | 6 | Socapax 19pin 25A | 包廂3 Box3 | 右舞台 Right Stage |
| | 包廂2 Box2 | | 159-164 | 6 | Socapax 19pin 25A | 包廂4 Box4 | |
| | 包廂3 Box3 | | 153-158 | 6 | Socapax 19pin 25A | 包廂1 Box1 | |
| | 包廂4 Box4 | | 159-164 | 6 | Socapax 19pin 25A | 包廂2 Box2 | |
| | 包廂1 Box1 | 右舞台 Right Stage | 165-170 | 6 | Socapax 19pin 25A | 包廂3 Box3 | 左舞台 Left Stage |
| | 包廂2 Box2 | | 171-176 | 6 | Socapax 19pin 25A | 包廂4 Box4 | |
| | 包廂3 Box3 | | 165-170 | 6 | Socapax 19pin 25A | 包廂1 Box1 | |
| | 包廂4 Box4 | | 171-176 | 6 | Socapax 19pin 25A | 包廂2 Box2 | |
| 備註：由最靠舞台的包廂起算1至4號。 Note: The circuits are numbered from proscenium arch. | | | | | | | |

圖 (十五) 大表演廳_燈光迴路圖表- 5
Figure(15) Main Theatre__Lighting Circuit Chart - 5

| 位置 Position | | 迴路盒 / 迴路編號 Circuit Box / Circuit number | 迴路數 Quantity | 備註 Note | 重號位置 The position of the repeat circuit |
|---|-------------------------------|--|-----------------|--|--|
| 3F | 工作廊道 (右) Right Gallery | Box 1. 177-182 | 6 | Socapax 19pin 25A | 右側下舞台牆面 DR |
| | | Box 1. 369-374 | 6 | Socapax 19pin 25A | 燈桿3(#28) Elec3 |
| | | Box 1. 405-410 | 6 | Socapax 19pin 25A | 燈桿1(#8) Elec1 |
| | | Box 2. 183-188 | 6 | Socapax 19pin 25A | 右側下舞台牆面 DR |
| | | Box 2. 375-380 | 6 | Socapax 19pin 25A | 燈桿3(#28) Elec3 |
| | | Box 2. 411-416 | 6 | Socapax 19pin 25A | 燈桿1(#8) Elec1 |
| | | Box 3. 189-194 | 6 | Socapax 19pin 25A | 右側下舞台牆面 DR |
| | | Box 3. 381-386 | 6 | Socapax 19pin 25A | 燈桿3(#28) Elec3 |
| | | Box 3. 417-422 | 6 | Socapax 19pin 25A | 燈桿1(#8) Elec1 |
| | | Box 4. 195-200 | 6 | Socapax 19pin 25A | 右側下舞台牆面 DR |
| | | Box 4. 387-392 | 6 | Socapax 19pin 25A | 燈桿3(#28) Elec3 |
| | | Box 4. 423-428 | 6 | Socapax 19pin 25A | 燈桿1(#8) Elec1 |
| | | Box 5. 201-206 | 6 | Socapax 19pin 25A | 右側下舞台牆面 DR |
| | | Box 5. 393-398 | 6 | Socapax 19pin 25A | 燈桿3(#28) Elec3 |
| | | Box 5. 429-434 | 6 | Socapax 19pin 25A | 燈桿2(#17) Elec2 |
| | | Box 6. 207-212 | 6 | Socapax 19pin 25A | 右側下舞台牆面 DR |
| | | Box 6. 399-404 | 6 | Socapax 19pin 25A | 燈桿1(#8) Elec1 |
| | | Box 6. 435-440 | 6 | Socapax 19pin 25A | 燈桿2(#17) Elec2 |
| | 工作廊道 (中後) Up-Stage Gallery | Box 7. 021-026 027-032 | 12 | Socapax 19pin 25A 大歐規 CEE 3pin 32A(5KW) | 燈桿6(#58) Elec6 |
| 備註：迴路方向為外接電箱起算，每個框線為一個迴路，迴路箱方向為由上至下。 Note: The circuit boxes are numbered from down stage to up stage. Circuit numbers are from top to bottom. | | | | | |

圖 (十六) 大表演廳_燈光迴路圖表-6
Figure(16) Main Theatre__Lighting Circuit Chart - 6

| 位置 Position | | 迴路盒 / 迴路編號 Circuit Box / Circuit number | 迴路數 Quantity | 備註 Note | 重號位置 The position of the repeat circuit |
|---|--------------------------|--|-----------------|-------------------|--|
| 3F | 工作廊道 (左) Left Gallery | Box 1. 213-218 | 6 | Socapax 19pin 25A | 左側下舞台牆面 DL |
| | | Box 1. 441-446 | 6 | Socapax 19pin 25A | 燈桿2(#17) Elec2 |
| | | Box 1. 477-482 | 6 | Socapax 19pin 25A | 燈桿4(#38) Elec4 |
| | | Box 2. 219-224 | 6 | Socapax 19pin 25A | 左側下舞台牆面 DL |
| | | Box 2. 447-452 | 6 | Socapax 19pin 25A | 燈桿2(#17) Elec2 |
| | | Box 2. 483-488 | 6 | Socapax 19pin 25A | 燈桿4(#38) Elec4 |
| | | Box 3. 225-230 | 6 | Socapax 19pin 25A | 左側下舞台牆面 DL |
| | | Box 3. 453-458 | 6 | Socapax 19pin 25A | 燈桿2(#17) Elec2 |
| | | Box 3. 489-494 | 6 | Socapax 19pin 25A | 燈桿5(#48) Elec5 |
| | | Box 4. 231-236 | 6 | Socapax 19pin 25A | 左側下舞台牆面 DL |
| | | Box 4. 459-464 | 6 | Socapax 19pin 25A | 燈桿4(#38) Elec4 |
| | | Box 4. 495-500 | 6 | Socapax 19pin 25A | 燈桿5(#48) Elec5 |
| | | Box 5.237-242 | 6 | Socapax 19pin 25A | 左側下舞台牆面 DL |
| | | Box 5.465-470 | 6 | Socapax 19pin 25A | 燈桿4(#38) Elec4 |
| | | Box 5.501-506 | 6 | Socapax 19pin 25A | 燈桿5(#48) Elec5 |
| | | Box 6. 243-248 | 6 | Socapax 19pin 25A | 左側下舞台牆面 DL |
| | | Box 6. 471-476 | 6 | Socapax 19pin 25A | 燈桿4(#38) Elec4 |
| | | Box 6. 507-512 | 6 | Socapax 19pin 25A | 燈桿5(#48) Elec5 |
| 備註：迴路方向為白門起算，每個框線為一個迴路，迴路箱方向為由上至下。 Note: The circuit boxes are numbered from down stage to up stage. Circuit numbers are from top to bottom. | | | | | |

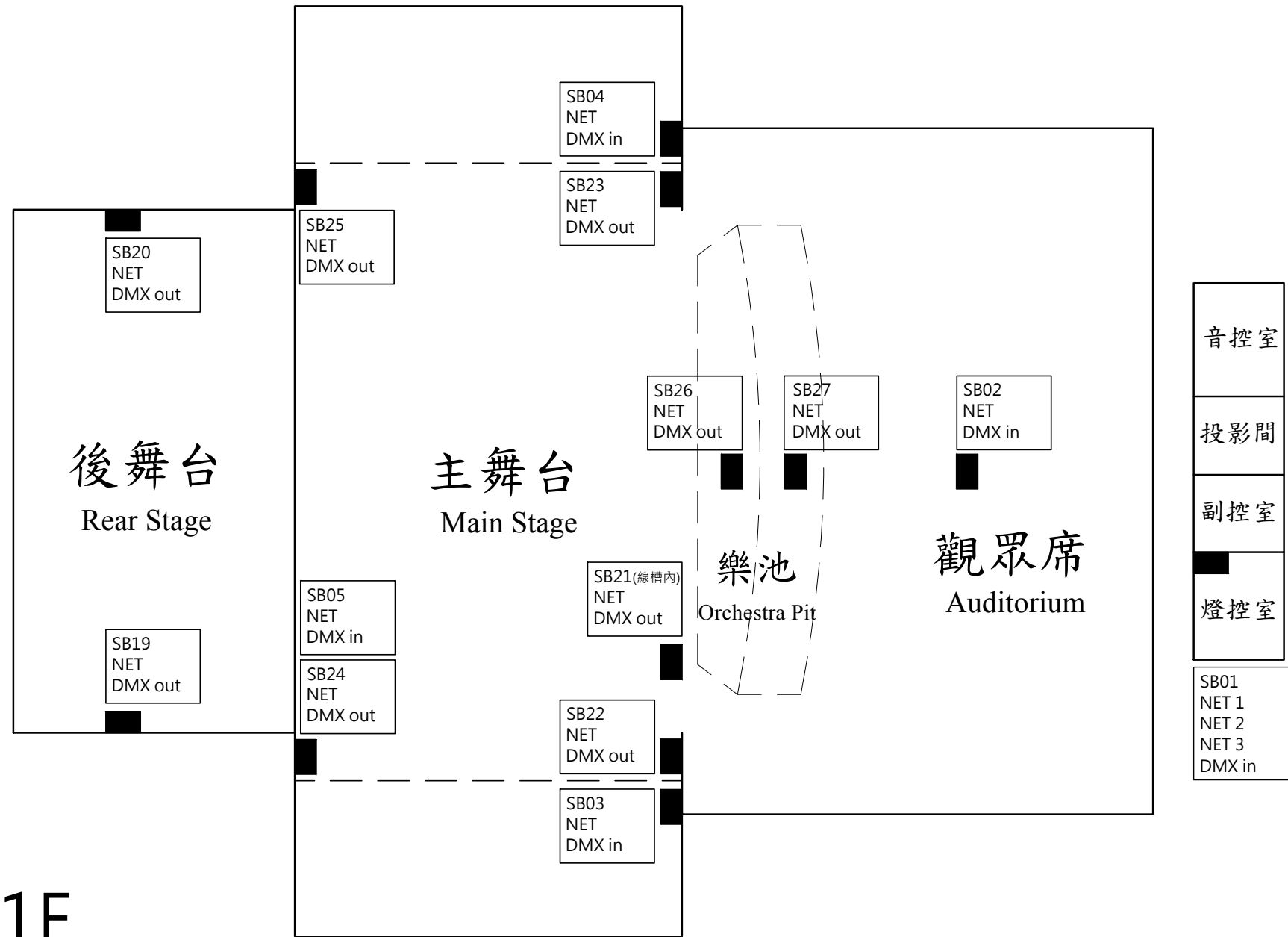
圖 (十七) 大表演廳_燈光迴路圖表-7
Figure(17) Main Theatre__Lighting Circuit Chart - 7

| 位置 Position | 迴路編號 Circuit number | 迴路數 Quantity | 備註 Note | 重號位置 The position of the repeat circuit | |
|----------------|------------------------|-----------------|------------|--|----------------|
| 7F | 上舞台牆面 (右) UR | 021-032 | 12 | Socapax 19pin 25A 大歐規 CEE 3pin 32A(5KW) | 燈桿6(#58) Elec6 |
| | 上舞台牆面 (右) UR | 369-374 | 6 | Socapax 19pin 25A | 燈桿3(#28) Elec3 |
| | | 375-380 | 6 | Socapax 19pin 25A | 燈桿3(#28) Elec3 |
| | | 381-386 | 6 | Socapax 19pin 25A | 燈桿3(#28) Elec3 |
| | | 387-392 | 6 | Socapax 19pin 25A | 燈桿3(#28) Elec3 |
| | | 393-398 | 6 | Socapax 19pin 25A | 燈桿3(#28) Elec3 |
| | | 399-404 | 6 | Socapax 19pin 25A | 燈桿1(#8) Elec1 |
| | 上舞台牆面 (右中) UC | 405-410 | 6 | Socapax 19pin 25A | 燈桿1(#8) Elec1 |
| | | 411-416 | 6 | Socapax 19pin 25A | 燈桿1(#8) Elec1 |
| | | 417-422 | 6 | Socapax 19pin 25A | 燈桿1(#8) Elec1 |
| | | 423-428 | 6 | Socapax 19pin 25A | 燈桿1(#8) Elec1 |
| | | 429-434 | 6 | Socapax 19pin 25A | 燈桿2(#17) Elec2 |
| | | 435-440 | 6 | Socapax 19pin 25A | 燈桿2(#17) Elec2 |
| | 上舞台牆面 (左中) UL | 441-446 | 6 | Socapax 19pin 25A | 燈桿2(#17) Elec2 |
| | | 447-452 | 6 | Socapax 19pin 25A | 燈桿2(#17) Elec2 |
| | | 453-458 | 6 | Socapax 19pin 25A | 燈桿2(#17) Elec2 |
| | | 459-464 | 6 | Socapax 19pin 25A | 燈桿4(#38) Elec4 |
| | | 465-470 | 6 | Socapax 19pin 25A | 燈桿4(#38) Elec4 |
| | | 471-476 | 6 | Socapax 19pin 25A | 燈桿4(#38) Elec4 |

圖 (十八) 大表演廳_燈光迴路圖表- 8
Figure(18) Main Theatre__Lighting Circuit Chart - 8

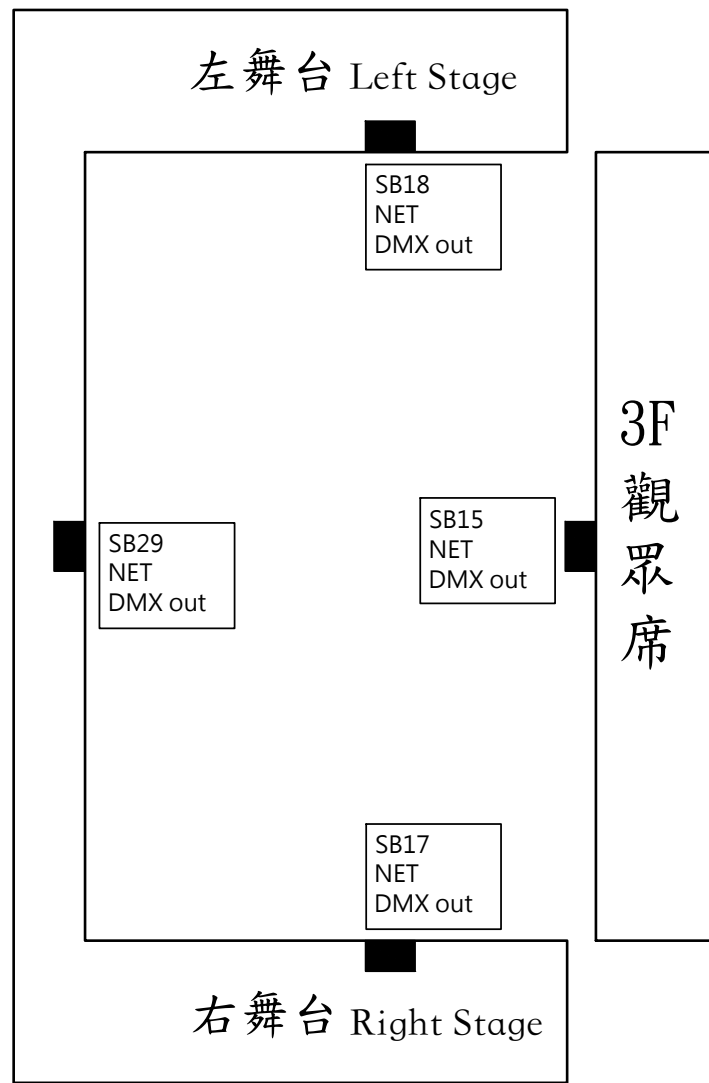
| 位置 Position | 迴路編號 Circuit number | 迴路數 Quantity | 備註 Note | 重號位置 The position of the repeat circuit | |
|----------------|------------------------|-----------------|------------|--|----------------|
| 7F | 上舞台牆面 (左) UL | 477-482 | 6 | Socapax 19pin 25A | 燈桿2(#17) Elec2 |
| | | 483-488 | 6 | Socapax 19pin 25A | 燈桿2(#17) Elec2 |
| | | 489-494 | 6 | Socapax 19pin 25A | 燈桿2(#17) Elec2 |
| | | 495-500 | 6 | Socapax 19pin 25A | 燈桿4(#38) Elec4 |
| | | 501-506 | 6 | Socapax 19pin 25A | 燈桿4(#38) Elec4 |
| | | 507-512 | 6 | Socapax 19pin 25A | 燈桿4(#38) Elec4 |
| | 上舞台牆面 (左) UL | 021-032 | 12 | Socapax 19pin 25A 大歐規CEE 3pin 32A(5KW) | 燈桿6(#58) Elec6 |

圖 (十九) 大表演廳_燈光迴路圖表- 9
Figure(19) Main Theatre__Lighting Circuit Chart - 9

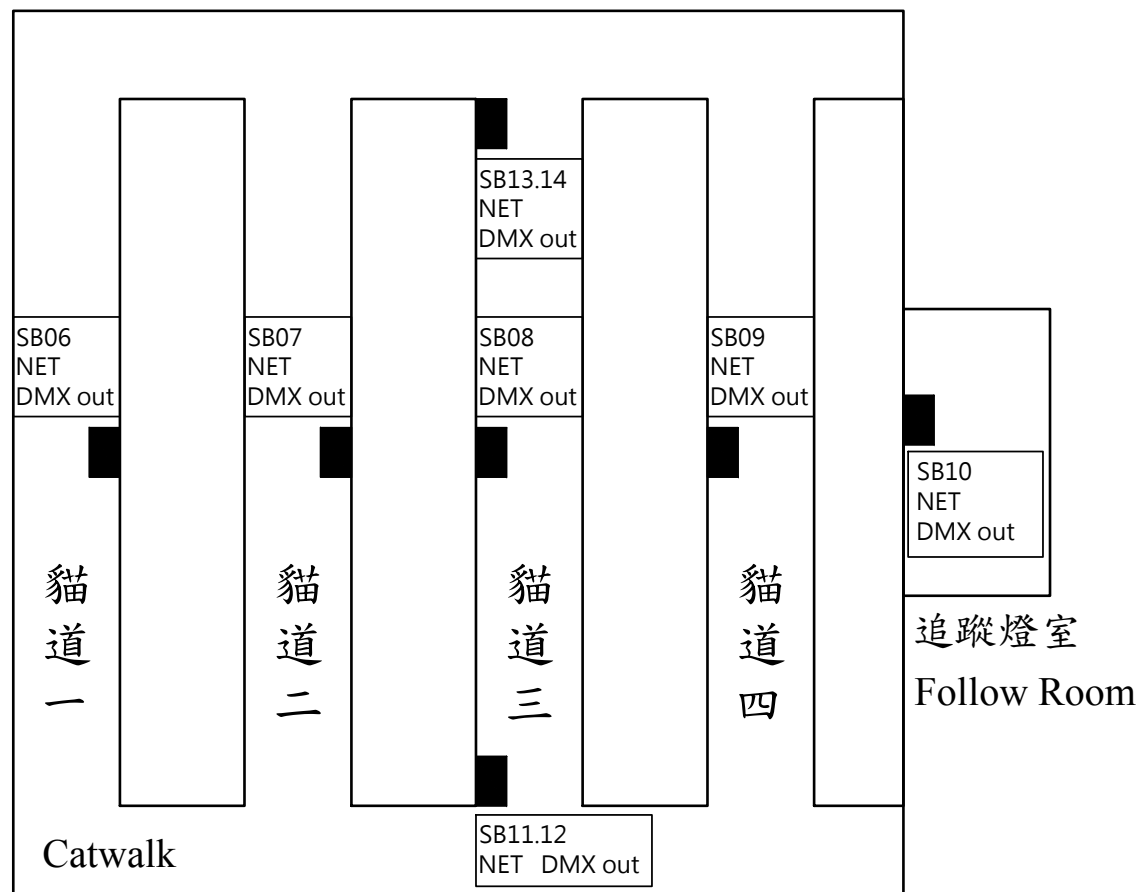


1F

圖 (二十) 大表演廳_1F 燈光訊號盒位置圖
Figure(20) Main Theatre_1F Lighting Signal Chart



3F

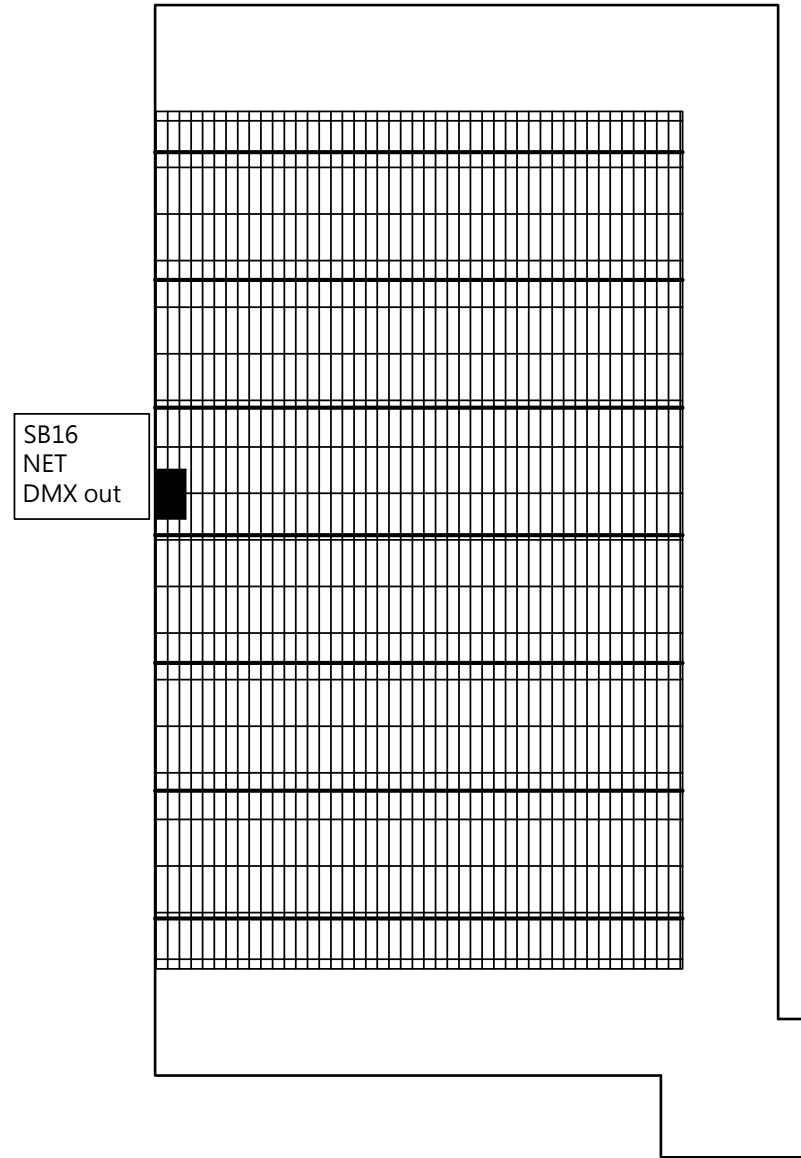


4F

圖 (二十一) 大表演廳__3F、4F 燈光訊號盒位置圖
Figure(20) Main Theatre__ 3F 、4F Lighting Signal Chart



B1



7F

圖 (二十二) 大表演廳__B1、7F 燈光訊號盒位置圖
Figure(22) Main Theatre__B1、7F Lighting Signal Chart

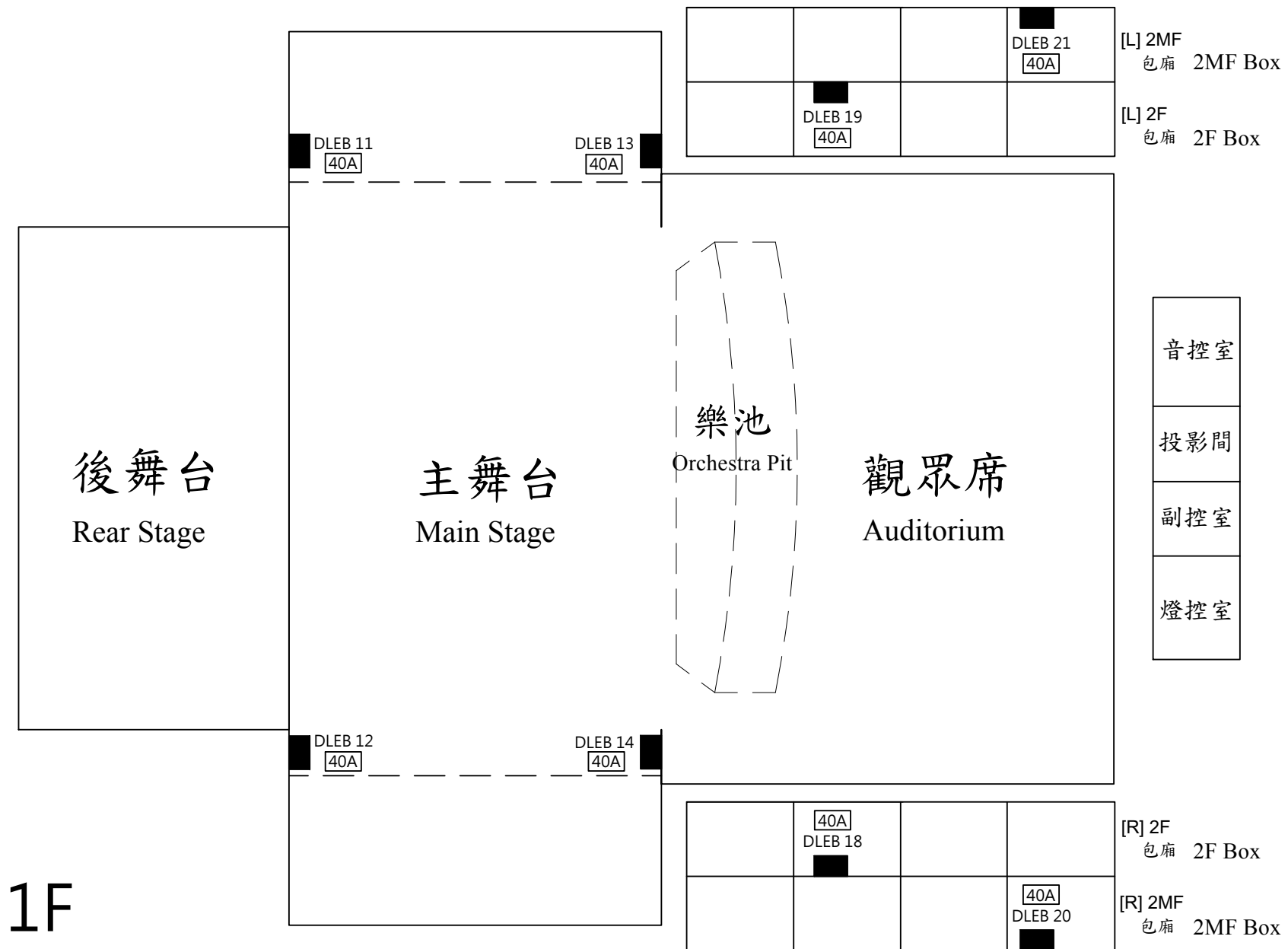
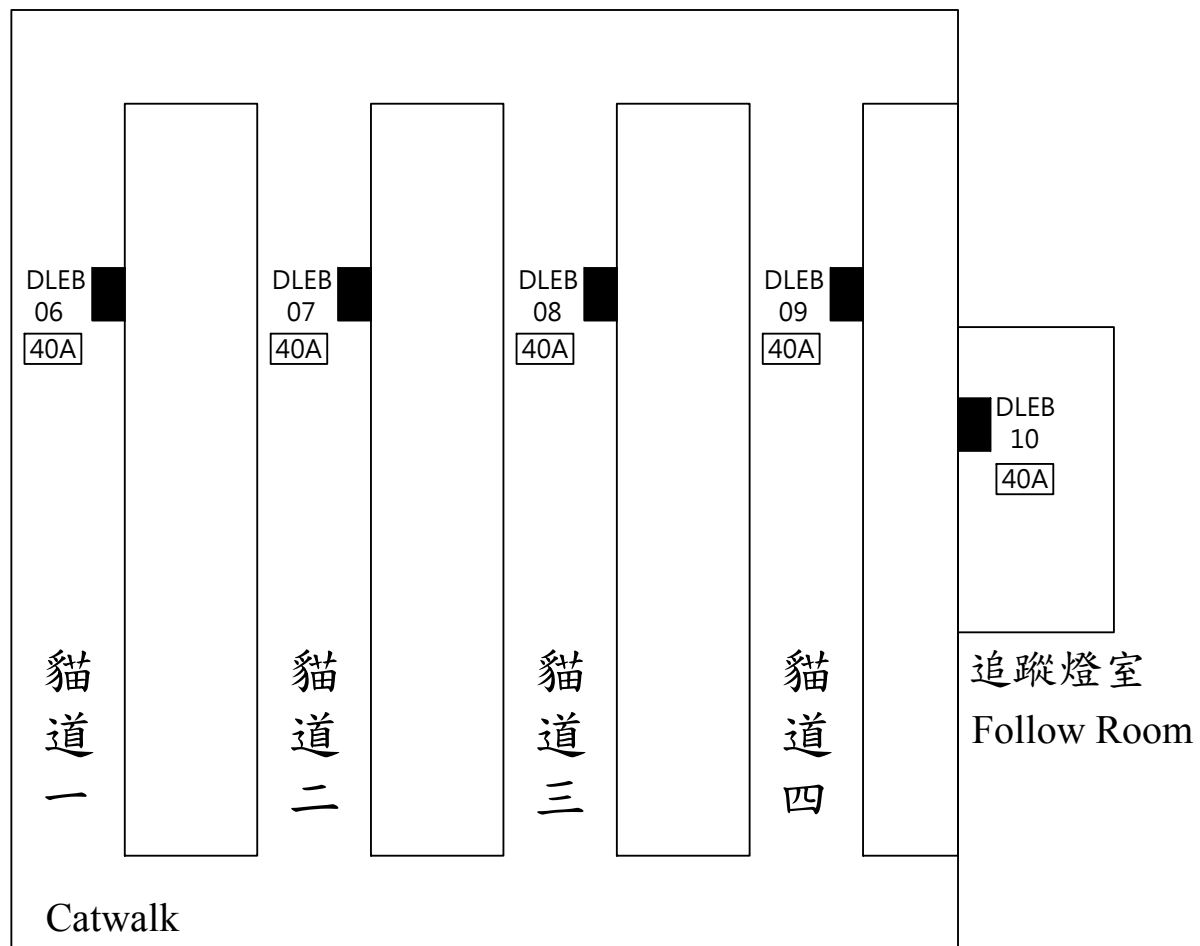


圖 (二十三) 大表演廳__ 1F、2F、2MF直通電箱位置圖
Figure(23) Main Theatre__ 1F、2F、2MF Electricity Box



4F

圖 (二十四) 大表演廳__4F 直通電箱位置圖
Figure(24) Main Theatre__4F Electricity Box